



**COMPLETE  
FLY ASH BRICKS &**



**INTERLOCKING  
PAVER BLOCK  
MAKING MACHINERY**



**Manufacturer & Exporter**



---

## ABOUT US...

We **NESTA MACHINERY Co.** is an ISO 9001:2015 certified company Leading Manufacturer & Exporter of Fully automatic fly ash Bricks & interlocking Paver Block making Machine, batching plant based in Morbi Gujarat India.

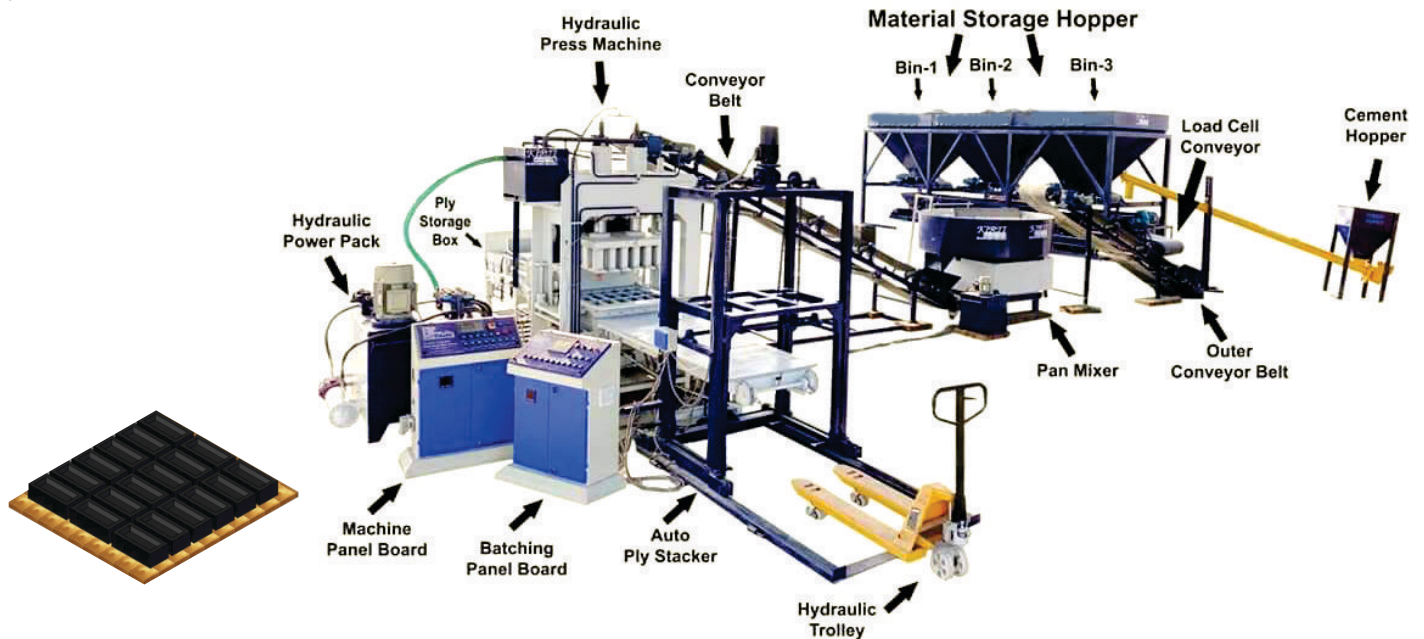
Company established in 2021 under the supervision of **Mr. Kantilal Nakum** has a 5 year Experience in Machinery Manufacturing & Marketing.

Our Machine is manufactured using best quality parts & technology at our work shop under super direction of well qualified technical staff. We design & develop machine as per the clients requirement as we believe in international standard quality. Our satisfied client based in all over India & Africa also. **NESTA MACHINERY Co.** is a top Machinery manufacturer in Gujarat and has a good Prestige in market so you can rest assure about the quality of machine.

**NESTA MACHINERY Co.** Products Range automatic Fly ash Bricks making machine, Paver Block Making machine, Solid Block making machine, Hollow Block Making machine, Batching Plant, Vibrator Table, Pan Mixer, Color Mixer, Material Handling Trolley.



**Model - NESTA 01**  
**Automatic Fly ash Bricks & Block Making Machine**  
**with Auto Pallets Stacker system &**  
**Material Batching plant.**

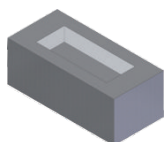


### Technical Specification

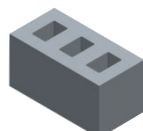
<b>Cylinder Tonage Capacity</b>	: 150 ton + 150 ton (Double Hydraulic Pressure Cylinder)		
<b>Cylinder DIA</b>	: 200x250mm	<b>Cycle Period for bricks 1 operation</b>	: 18 to 20 Seconds
<b>Total Power Need</b>	: 65.5HP / 48.8Kw	<b>Cycle Period for Color Paver</b>	: 25 to 30 Seconds
<b>Oil Tank Capacity</b>	: 600 Ltr. (68 No. Hydraulic Oil)	<b>Color Feeder</b>	: Optional (Extra Charge)
<b>Operating System</b>	: PLC panel	<b>Stacker System</b>	: Attached with Machine
<b>Main Technology</b>	: Hi Pressure + Vibration	<b>Pallet Dimension</b>	: 800x925x30mm

### Production Detail

<b>Fly Ash Bricks</b>	: 230x100x75mm - 18KVT	3200pcs/Hour	<b>Solid/Hollow Block</b>	: 400x200x200mm - 4KVT	720pcs/Hour
	: 230x110x75mm - 18KVT	3200pcs/Hour		: 400x150x200mm - 4KVT	720pcs/Hour
	: 250x125x75mm - 15KVT	2700pcs/Hour		: 300x200x150mm - 6KVT	1080pcs/Hour
<b>ZigZag Paver</b>	: 220x110x60mm - 15KVT	2700pcs/Hour	<b>I shape Paver</b>	: 200x165x60mm - 12KVT	2160pcs/Hour



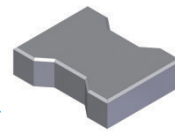
Fly Ash Bricks



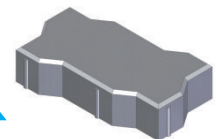
Hollow Block



Solid Block

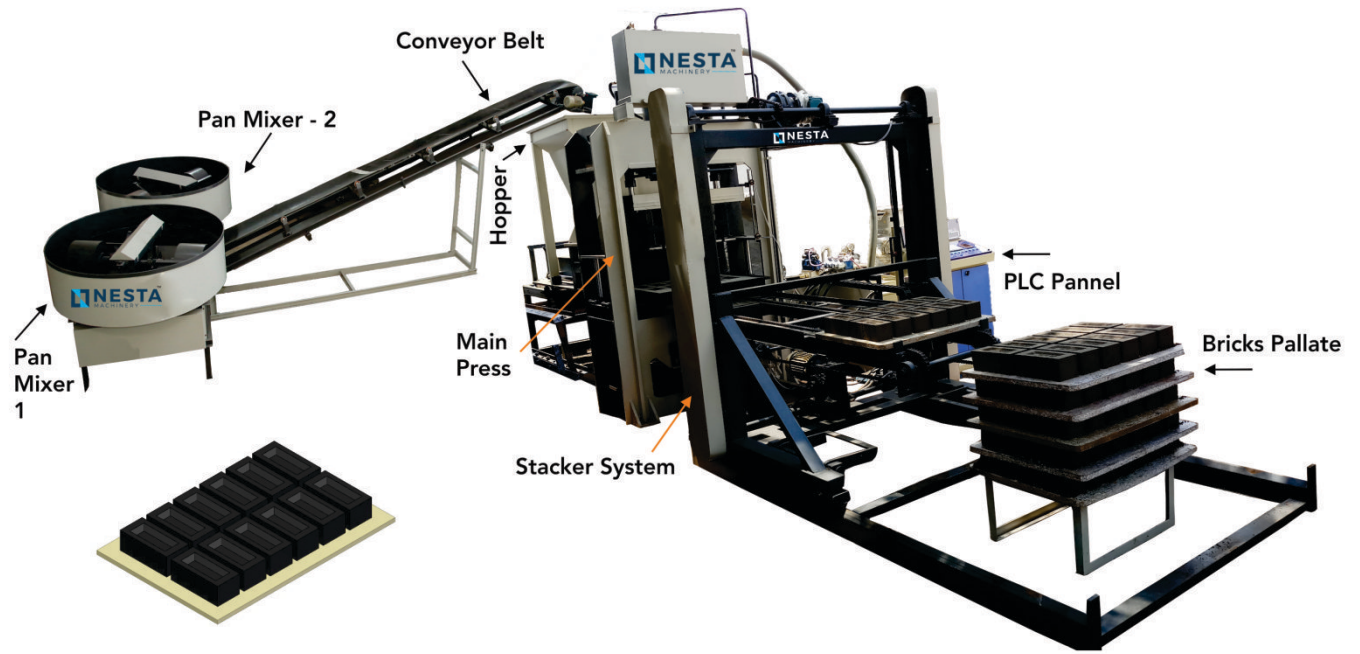


I shape Paver



ZigZag Paver

**Model - NESTA 02**  
**Automatic Fly ash Bricks & Block Making Machine**  
**with Auto Pallets Stacker system.**

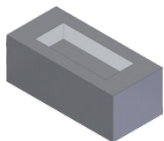


**Technical Specification**

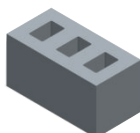
<b>Cylinder Tonage Capacity</b>	: 110 ton +110 ton (Double Hydraulic Pressure Cylinder)		
<b>Cylinder DIA</b>	: 150x200mm	<b>Cycle Period for bricks 1 operation</b>	: 18 to 20 Seconds
<b>Total Power Need</b>	: 46HP/34.27Kw	<b>Cycle Period for Color Paver</b>	: 25 to 30 Seconds
<b>Oil Tank Capacity</b>	: 550 Ltr. (68 no Hydraulic oil)	<b>Color Feeder</b>	: Optional (Extra Charge)
<b>Operating System</b>	: PLC Panel Control	<b>Stacker System</b>	: Attached with Machine
<b>Main Technology</b>	: Hi Pressure + Vibration	<b>Pallet Dimension</b>	: 600x860x24mm

**Production Detail**

<b>Fly Ash Bricks</b>	: 230x100x75mm - 12KVT	2160pcs/Hour	<b>Solid/Hollow Block</b>	: 400x200x200mm - 3KVT	540pcs/Hour
	: 230x110x75mm - 12KVT	2160pcs/Hour		: 400x150x200mm - 4KVT	720pcs/Hour
	: 250x125x75mm - 10KVT	1800pcs/Hour		: 300x200x150mm - 4KVT	720pcs/Hour
<b>ZigZag Paver</b>	: 220x110x60mm - 10KVT	1800pcs/Hour	<b>I Shape Paver</b>	: 200x165x60mm - 8KVT	1440pcs/Hour



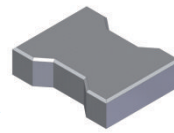
**Fly Ash Bricks**



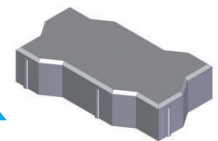
**Hollow Block**



**Solid Block**



**I shape Paver**



**ZigZag Paver**

## Model - NESTA 03 Automatic Fly ash Bricks & Block Making Machine.

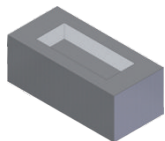


### Technical Specification

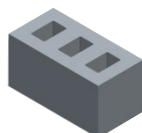
<b>Cylinder Tonnage Capacity</b>	: 110 to 150 ton		
<b>Cylinder DIA</b>	: 200x250mm	<b>Cycle Period for bricks 1 operation</b>	: 18 to 20 Seconds
<b>Total Power Need</b>	: 29HP/21.61Kw	<b>Cycle Period for Color Paver</b>	: 25 to 30 Seconds
<b>Oil Tank Capacity</b>	: 500 Ltr. (68 no Hydraulic oil)	<b>Color Feeder</b>	: Optional (Extra Charge)
<b>Operating System</b>	: PLC Panel Control	<b>Stacker System</b>	: Optional (Extra Charge)
<b>Main Technology</b>	: Hi Pressure + Vibration	<b>Pallet Dimension</b>	: 600x750x18mm

### Production Detail

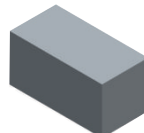
<b>Fly Ash Bricks</b>	: 230x100x75mm - 10KVT	1800pcs/Hour	<b>Solid/Hollow Block</b>	: 400x200x200mm - 2KVT	360pcs/Hour
	: 230x110x75mm - 10KVT	1800pcs/Hour		: 400x150x200mm - 3KVT	540pcs/Hour
	: 250x125x75mm - 8KVT	1440pcs/Hour		: 300x200x150mm - 3KVT	540pcs/Hour
<b>ZigZag Paver</b>	: 220x110x60mm - 8KVT	1440pcs/Hour	<b>I shape Paver</b>	: 200x165x60mm - 6KVT	1080pcs/Hour



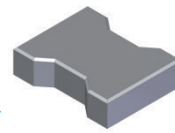
Fly Ash Bricks



Hollow Block



Solid Block



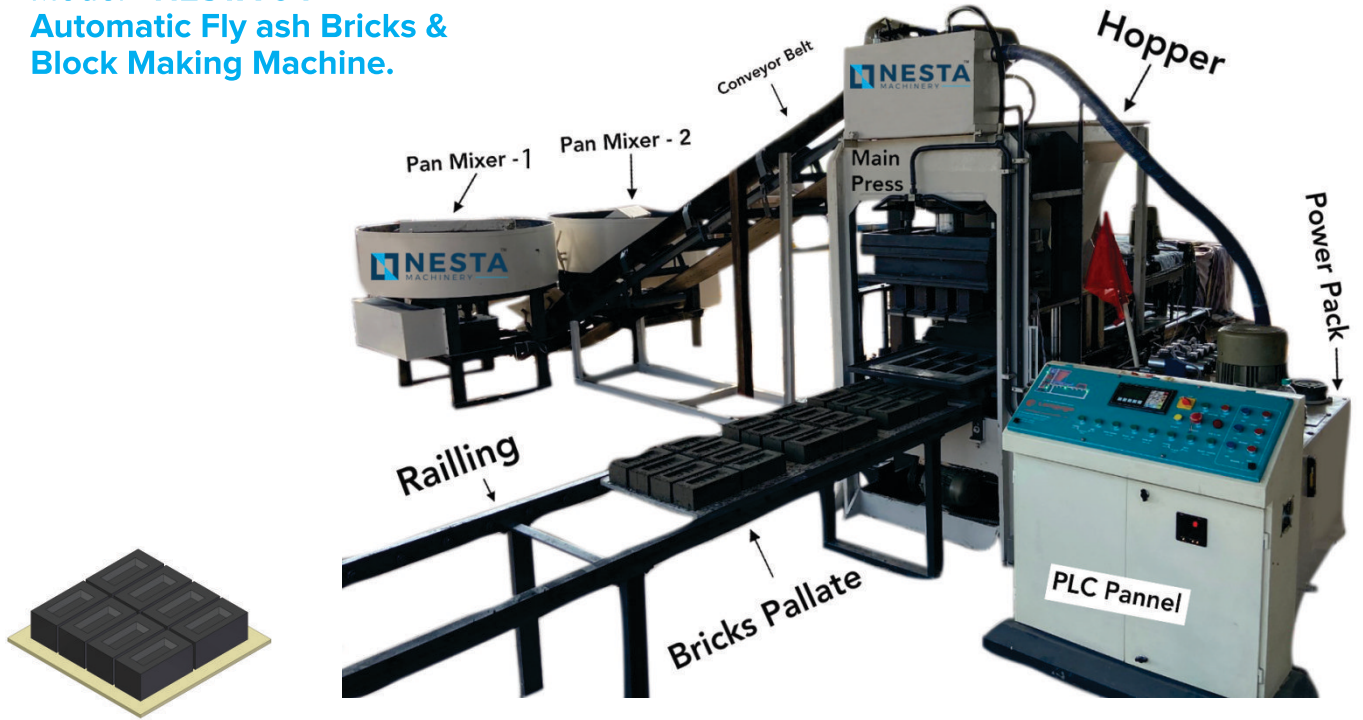
I shape Paver



ZigZag Paver



**Model - NESTA 04**  
**Automatic Fly ash Bricks & Block Making Machine.**

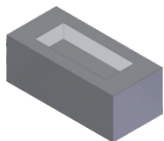


**Technical Specification**

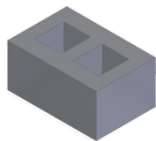
<b>Cylinder Tonage Capacity</b>	: 80 to 110 ton		
<b>Cylinder DIA</b>	: 150x200MM	<b>Cycle Period for bricks 1 operation</b>	: 18 to 20 Seconds
<b>Total Power Need</b>	: 24HP/17.9Kw	<b>Cycle Period for Color Paver</b>	: 25 to 30 Seconds
<b>Oil Tank Capacity</b>	: 450 Ltr. (68 no Hydraulic oil)	<b>Color Feeder</b>	: Optional (Extra Charge)
<b>Operating System</b>	: PLC Panel Control	<b>Stacker System</b>	: Optional (Extra Charge)
<b>Main Technology</b>	: Hi Pressure + Vibration	<b>Pallet Dimension</b>	: 600x600x18mm

**Production Detail**

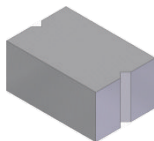
<b>Fly Ash Bricks</b>	: 230x100x75mm - 8KVT		1440pcs/Hour	<b>Solid/Hollow Block</b>	: 300x200x150MM-2KVT		360pcs/Hour	
	: 230x110x75mm - 8KVT		1440pcs/Hour					
	: 250x125x75mm - 6KVT		1080pcs/Hour					
<b>ZigZag Paver</b>	: 220x110x60mm - 6KVT		1080pcs/Hour	<b>I shape Paver</b>	: 200x165x60mm - 4KVT		720pcs/Hour	



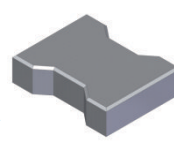
Fly Ash Bricks



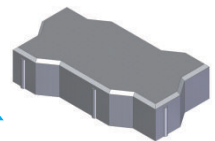
Hollow Block



Solid Block



I shape Paver



ZigZag Paver

**Model - NESTA 05**  
**Automatic Fly ash Bricks & Block Making Machine.**

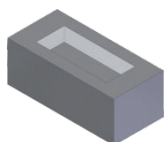


**Technical Specification**

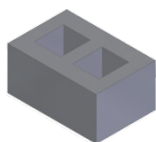
<b>Cylinder Tonage Capacity</b>	: 50 to 70 ton		
<b>Cylinder DIA</b>	: 125x180mm	<b>Cycle Period for bricks 1 operation</b>	: 18 to 20 Seconds
<b>Total Power Need</b>	: 19HP/14.16Kw	<b>Cycle Period for Color Paver</b>	: 25 to 30 Seconds
<b>Oil Tank Capacity</b>	: 400 Ltr. (68 no Hydraulic oil)	<b>Color Feeder</b>	: Optional (Extra Charge)
<b>Operating System</b>	: PLC Panel Control	<b>Stacker System</b>	: Optional (Extra Charge)
<b>Main Technology</b>	: Hi Pressure + Vibration	<b>Pallet Dimension</b>	: 450x600x18mm

**Production Detail**

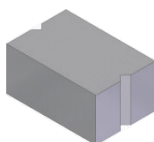
<b>Fly Ash Bricks</b>	: 230x100x75mm - 6KVT		1080pcs/Hour	<b>Solid/Hollow Block</b>	: 300x200x125mm - 2KVT		360pcs/Hour
	: 230x110x75mm - 6KVT		1080pcs/Hour				
	: 250x125x75mm - 4KVT		720pcs/Hour				
<b>ZigZag Paver</b>	: 220x110x60mm - 4KVT		720pcs/Hour	<b>I shape Paver</b>	: 200x165x60mm - 4KVT		720pcs/Hour



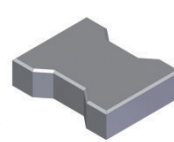
**Fly Ash Bricks**



**Hollow Block**



**Solid Block**

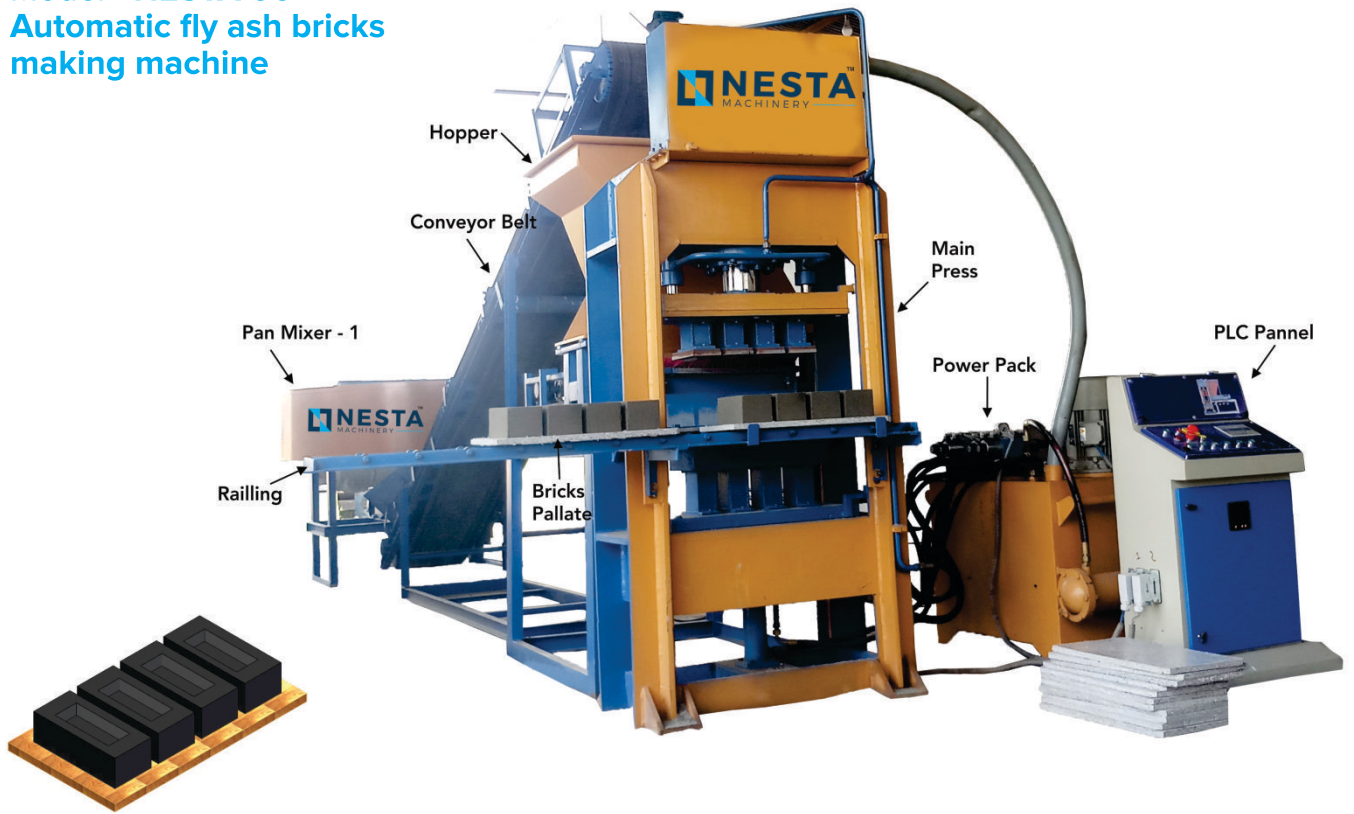


**I shape Paver**



**ZigZag Paver**

**Model - NESTA 06**  
**Automatic fly ash bricks making machine**

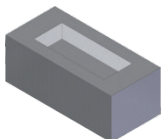


**Technical Specification**

<b>Cylinder Tonnage Capacity</b> : 80 to 110 ton	<b>Cycle Period for bricks 1 operation</b> : 10 to 12 Seconds
<b>Cylinder DIA</b> : 150x200mm	<b>Main Technology</b> : Hi Pressure
<b>Total Power Need</b> : 19.5HP/14.53Kw	<b>Pallet Dimension</b> : 300x600x18mm
<b>Oil Tank Capacity</b> : 400 Ltr. (68 no Hydraulic oil)	
<b>Operating System</b> : PLC Panel Control	

**Production Detail**

<b>Bricks</b> : 230x100x75mm - 4KVT	1440pcs/Hour
: 230x110x75mm - 4KVT	1440pcs/Hour
: 250x125x75mm - 3KVT	1080pcs/Hour



**Fly Ash Bricks**

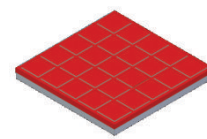


## Model - NESTA 07 Vibrating Table

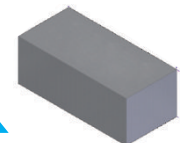


### Technical Specification

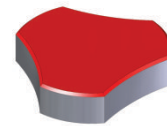
<b>Table size</b>	: 10ft x 3ft
<b>Electric motor</b>	: 2hp/3hp 3phase (Special vibration motor)
<b>Production Capacity</b>	: 2500 to 3000 pcs.
<b>Material use for Build</b>	: Top pallet 8/10mm, side pallets 8/10mm
<b>Application</b>	: For Making paver block, chequered tiles, curb stone, covering block through pvc rubber or plastic mould.



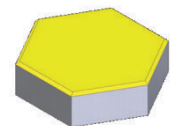
Checkered Tiles



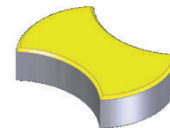
Bricks



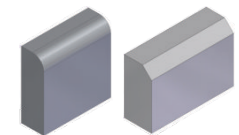
Cosmic



Hexagon Paver



Damru Paver



Kerb Stone

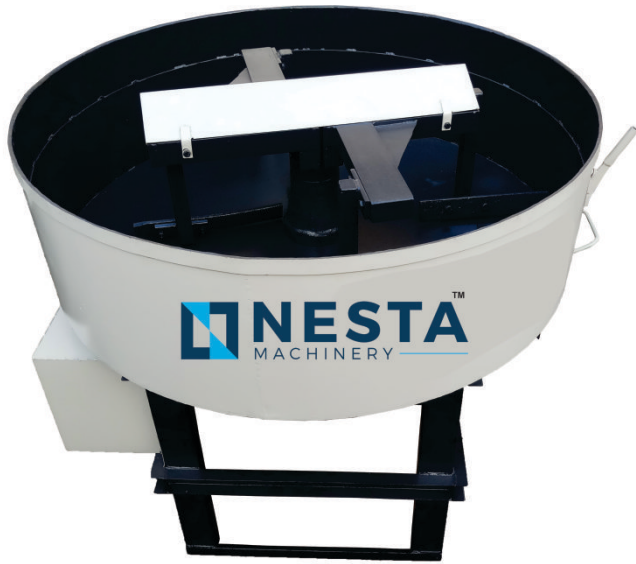
## Model - NESTA 08 Color Mixer Machine



### Technical Specification

<b>Diameter</b>	: 750 MM
<b>Pan Height</b>	: 300 MM
<b>Mixing Capacity</b>	: 100kg to 120kg
<b>Electric Motor</b>	: 2HP 3phase (Crompton)
<b>Oil Capacity</b>	: 10ltr. Gear Oil
<b>Material Mixing</b>	: By Heavy hand faced
<b>Material Charges/Discharge</b>	: Manual
<b>Material use for Build</b>	: Bottom pallet 8mm, side pallets 6mm
<b>Application</b>	: For color mixing top color layer of paver blocks.

Model - **NESTA 09**  
Blade Pan Mixer machine



**Technical Specification**

<b>Diameter</b>	: 1500 MM/1800 MM
<b>Pan Height</b>	: 500 MM
<b>Mixing Capacity</b>	: 400kg to 500kg
<b>Electric Motor</b>	: 5HP/7.5HP 3phase (Crompton)
<b>Oil Capacity</b>	: 15ltr. Gear Oil
<b>Material Mixing</b>	: By Heavy hand faced scraper
<b>Material Charges</b>	: Manual
<b>Material Discharges</b>	: Manual bottom door opening
<b>Material use for Build</b>	: Bottom pallet 12/15mm, side pallets 6/8mm
<b>Application</b>	: Mixing raw material of concrete, sand, cement 2nd layer of paver block.

Model - **NESTA 10**  
Concrete Mixer Machine

**Technical Specification**

<b>Machine Size</b>	: 1/2 bag & 1 bag
<b>Electric Motor</b>	: 3HP/5HP 3phase (Crompton)
<b>Diesel Engine</b>	: 5HP & 7.5HP
<b>Material Mixing</b>	: By Heavy hand faced scraper
<b>Drum Speed</b>	: 25-30RPM
<b>Material charges</b>	: Manual
<b>Material Discharge</b>	: Manual
<b>Application</b>	: Mixing raw material of concrete, sand, cement 2nd layer of paver block.



Model - **NESTA 11**  
Roller Pan Mixer machine



**Technical Specification**

<b>Diameter</b>	: 1500 MM/1800 MM
<b>Pan Height</b>	: 450/500 MM
<b>Mixing Capacity</b>	: 400kg to 500kg
<b>Electric Motor</b>	: 5HP/7.5HP 3phase (Crompton)
<b>Oil Capacity</b>	: 15ltr. Gear Oil
<b>Material Mixing</b>	: By Heavy hand faced scraper & Roller
<b>Material Charges</b>	: Manual
<b>Material Discharges</b>	: Manual bottom door opening
<b>Material use for Build</b>	: Bottom pallet 12/15mm, side pallets 6/8mm
<b>Application</b>	: Mixing raw material of Fly ash, cement, dust, concrete, Lime, for Fly ash bricks & Solid/Hollow Block.

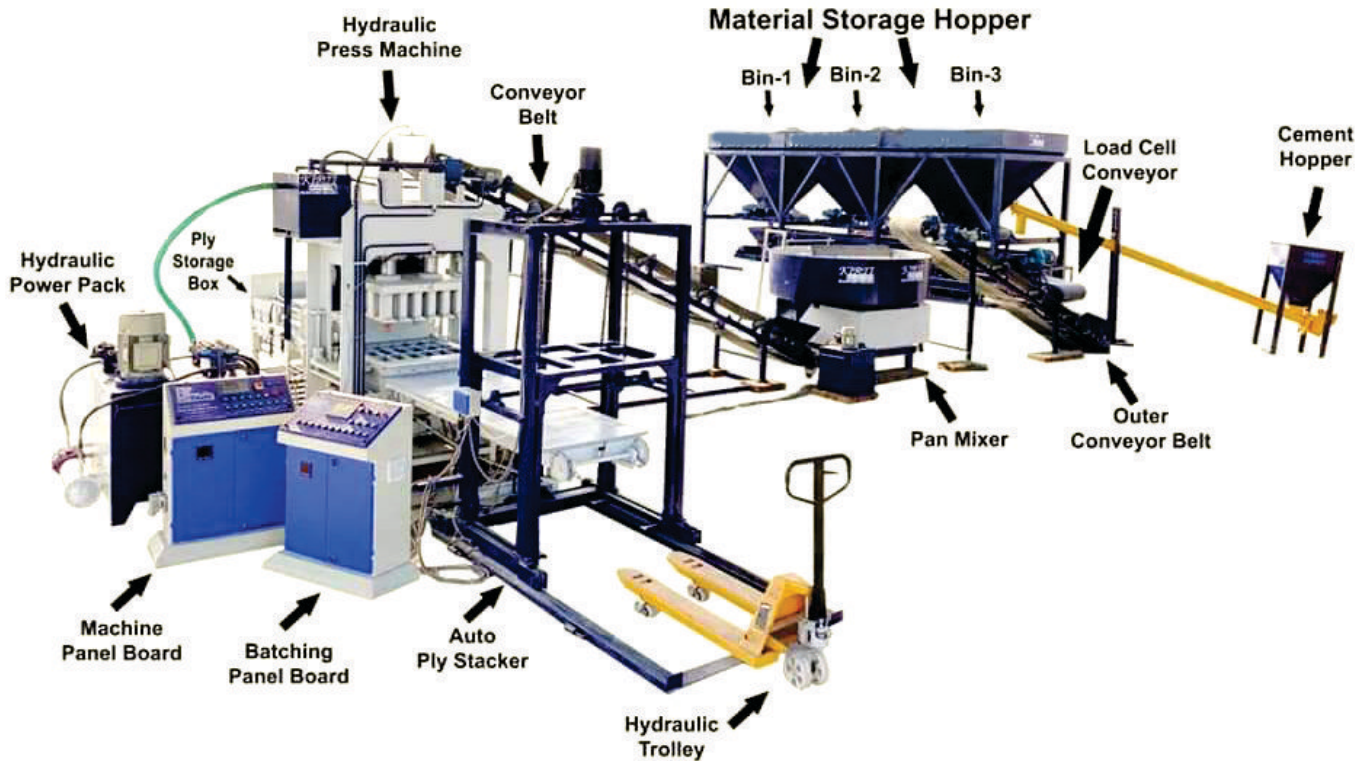
Model - **NESTA 12**  
Drum Type Color Mixer

**Technical Specification**

<b>Mixing Capacity</b>	: 150kg per batch
<b>Electric Motor</b>	: 2HP 3phase (Crompton)
<b>Material Mixing</b>	: By Blade & Roller
<b>Material charges</b>	: Manual
<b>Material use for Build</b>	: Bottom pallet 8MM, side pallets 6MM
<b>Application</b>	: For Mixing Dry oxide color for 1st color layer of paver blocks.



## Fully Automatic Batching Plant



### Technical Specification

1	Main Hydraulic Press Machine	8	Cement Hoper
2	Hydraulic Power Pack	9	Screw Conveyor
3	Auto Plate Stracker System	10	Material Bin
4	Material Feeder	11	Batching Conveyor
5	PLC Pannel	12	Hydraulic Trolly
6	Conveyor Belt	13	Bricks Pallet
7	Roller Pan Mixer		

(1)

Batching Machine is automatic batching equipment working with Mixer. It can automatically complete sand, stone, cement, fly ash & other species ingredients producers according to design of concrete requirement of users.

(2)

This equipment is composed of aggregate silo, weighting system, feeding system, Motor & gear system, control system and other components, its advantages are exact weighting, high precision of batching, speedy, strong controlling, easy operation.



### Pallets Trolley



### Hydraulic Forklift Trolley



### Cycle Trolley



### Borrow Trolley





## NESTA MACHINERY

Panchasar Road, Near Geeta Oil Mill, Morbi - 363 641. (Guj.) INDIA.

**C :** +91 7575 873 873 | 95374 333 00

**E :** nestamachinery@gmail.com

**W :** [www.nestamachinery.com](http://www.nestamachinery.com)